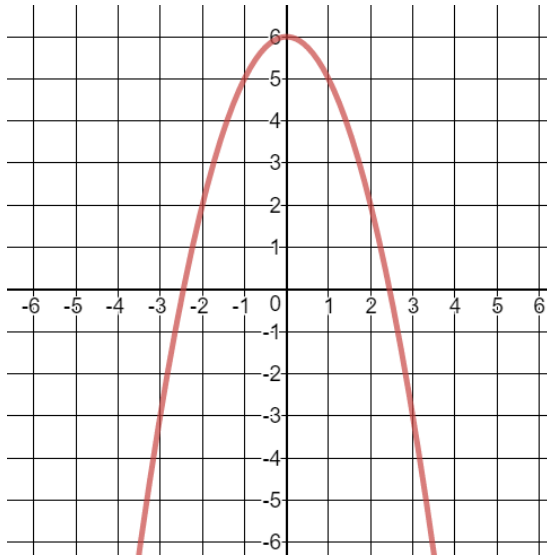
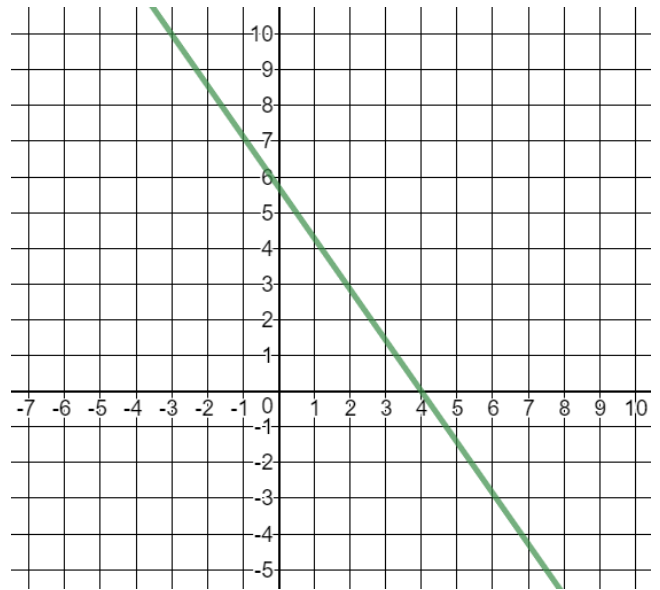


Solve the system by graphing. One graph may be given. Graph by hand, check by calculator.

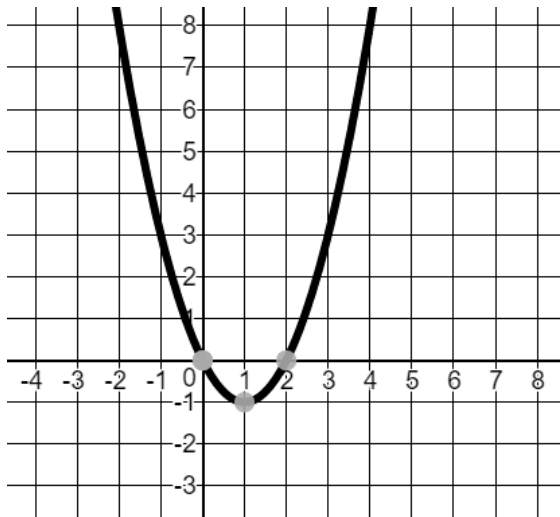
1) $y = -x^2 + 6$
 $x - y = -4$



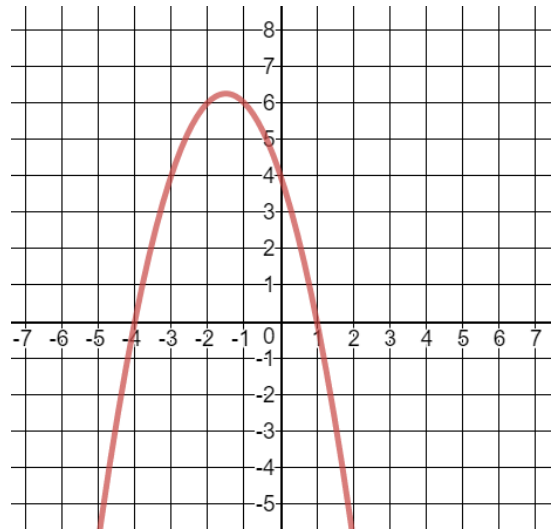
2) $y = \frac{1}{2}(x - 2)^2$
 $10x + 7y = -4$



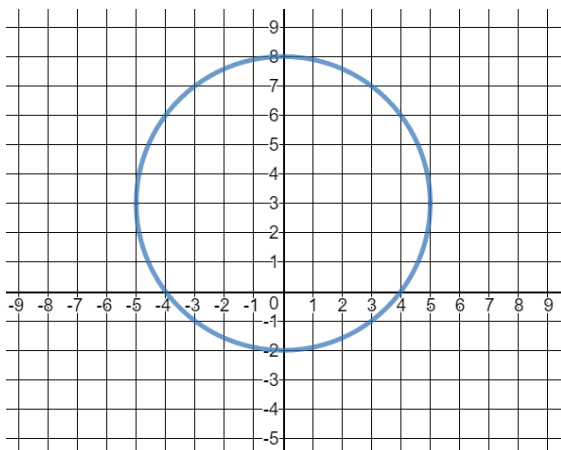
3) $y = x^2 - 2x$
 $y = 2x - 4$



4) $y = x^2 + 6x + 4$
 $y = -x^2 - 3x + 4$



5) $x^2 + (y - 2)^2 = 25$
 $4x - 3y = -9$



6) $y = x^2 - 3$
 $y = (x + 3)^2 - 6$

